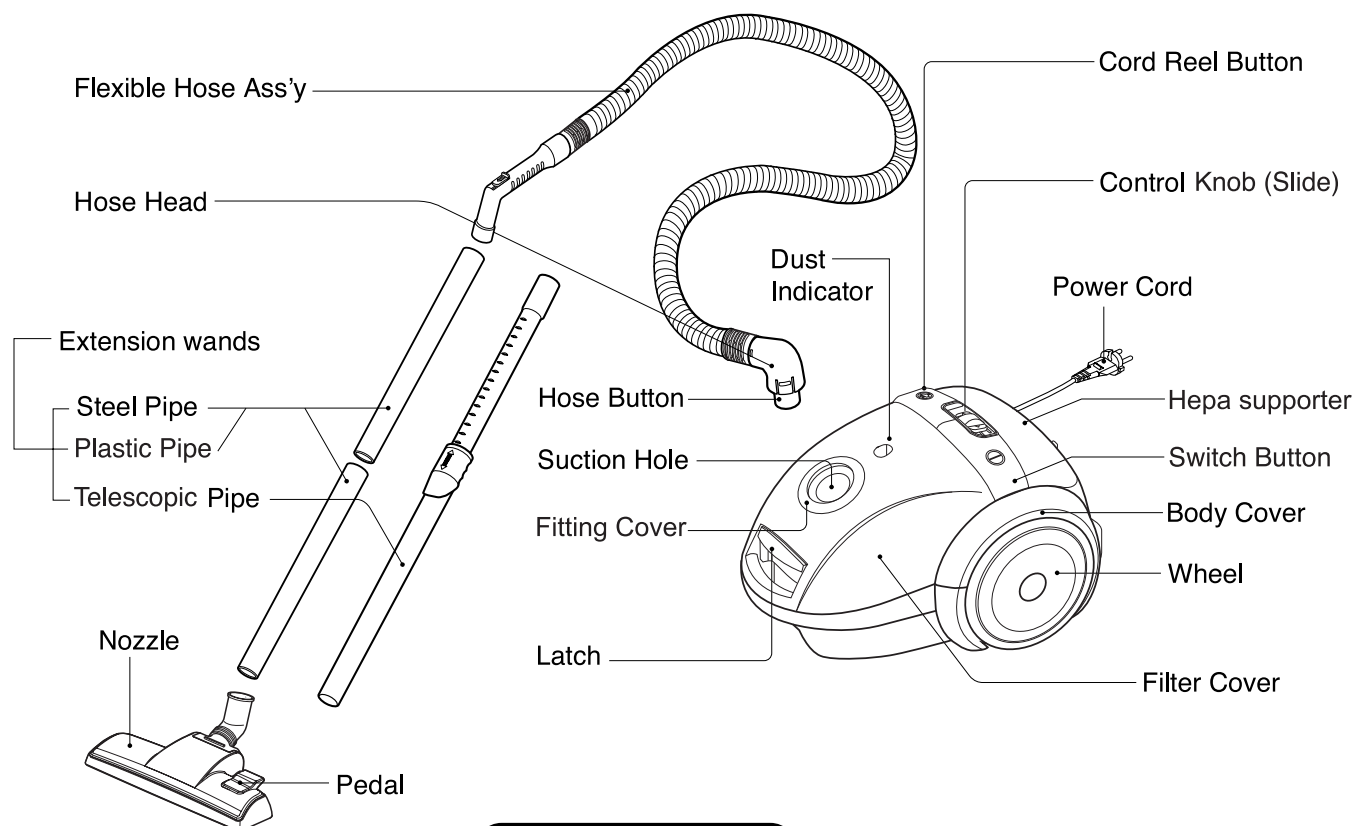


# DESCRIPTION



## ATTACHMENTS



# SPECIFICATIONS

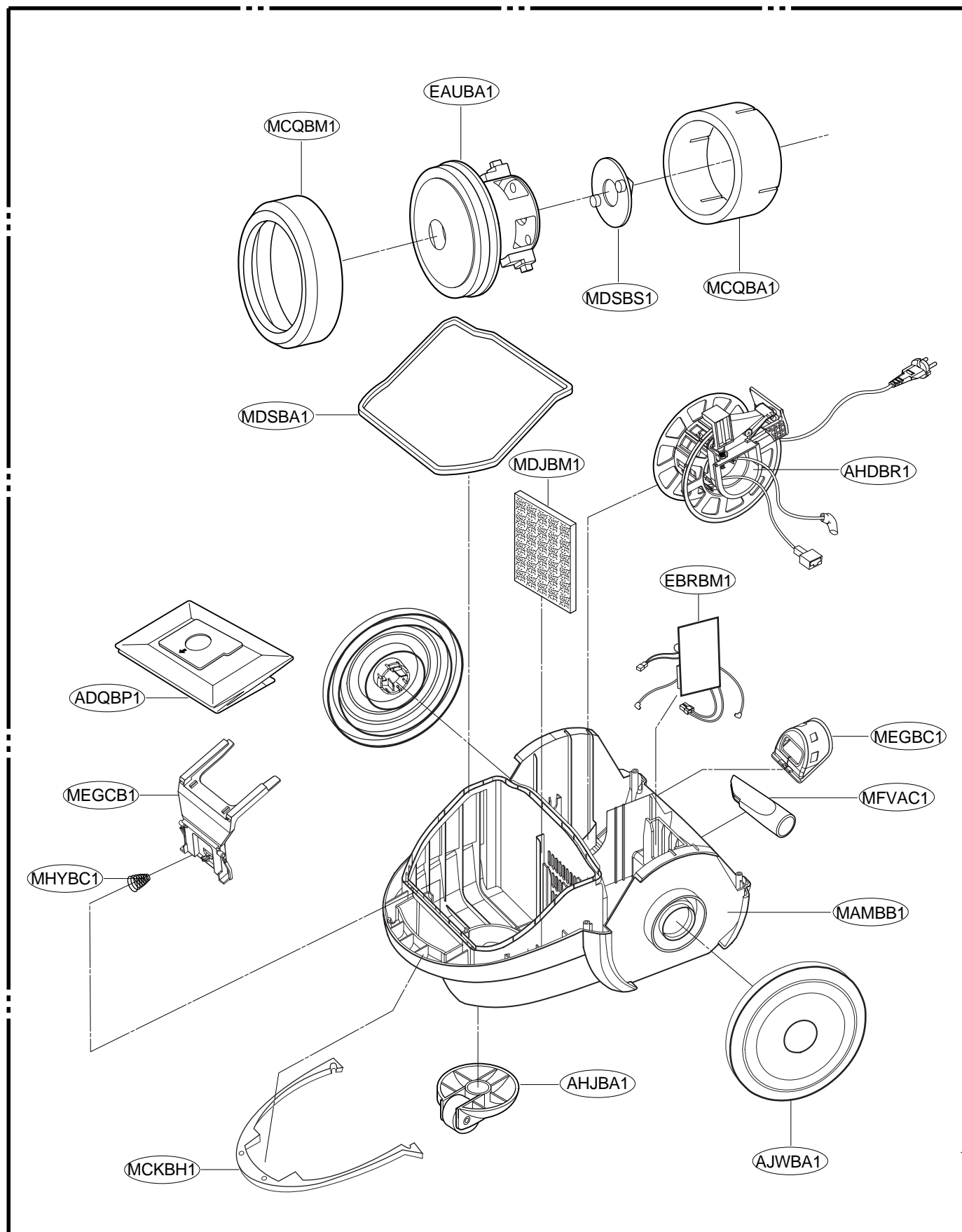
- **MODEL** : REFER TO THE COVER PAGE
- **POWER SOURCE** : ON RATING PLATE
- **POWER CONSUMPTION** : ON RATING PLATE
- **POWER CONTROL** :
  - **MAIN** : BODY SLIDE
- **CAPACITY** : 2.5 l (BAG)/1.5 l (BAGLESS)
- **CORD LENGTH** : 5 m /6 m
- **HOSE LENGTH** : 1.5 m
- **NET WEIGHT** : 4.9kg (BAGLESS)
- **PACKING WEIGHT** : 7.5kg (BAGLESS)
- **NET DIMENSION** : 284 x 386 x 236 (W x D x H)mm
- **PACKING DIMENSION** :
  - 330x550x290(WxDxH)mm - with short telescopic pipe/steel pipe/plastic pipe
  - 330x625x290(WxDxH)mm - with long telescopic pipe
- This specifications are subject to change according to the buyer's request.

## • ATTACHMENTS

HOSE .....	1EA
STEEL PIPE ASS'Y	OR .....1EA
TELESCOPIC PIPE ASS'Y	
PLASTIC PIPE ASS'Y	
NOZZLE ASS'Y .....	1EA
CREVICE TOOL (ON BOARD) .....	1EA
DUSTING BRUSH (OPTION) .....	1EA
CLOTH BAG ASS'Y	OR .....1EA
PAPER BAG ASS'Y	
UPHOLSTERY NOZZLE (OPTION) .....	1EA

# EXPLODED VIEW

## BASE ASSEMBLY, BODY



## COVER ASSEMBLY, BODY

